



Grant Park

Neighborhood Association

P.O. Box 13102, Portland, OR 97213

Summer 2025

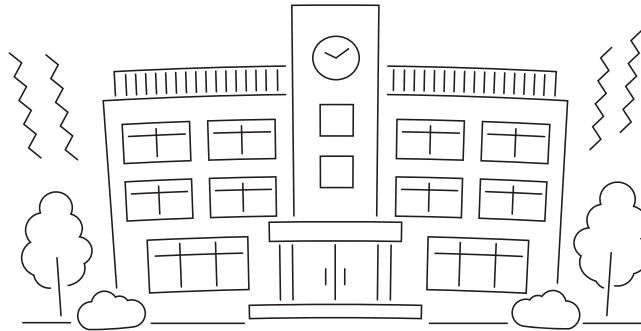
COOPER
DESIGN BUILD

Proud Sponsor of the Grant Park
Neighborhood Association

Seismic Safety a Top Priority for PPS Schools Following Bond Passage

By Kate Campbell and Per Olstad, Grant Park Neighbors and Beverly Cleary School Parents

In a major step forward for student and staff safety, on May 20th Portland voters approved the \$1.8 billion 2025 School Modernization Bond. Among the top priorities for the bond: addressing the seismic risks at 8–10 of the most seismically vulnerable elementary and middle schools in the district.



This a huge step forward on seismic safety across Portland Public Schools (PPS), particularly in the Grant Park neighborhood: Beverly Cleary School has one of the worst seismic performance risk ratings in the entire PPS system.

The allocation of bond funding for seismic safety was the result of a PPS Board resolution passed unanimously on May 6, 2025. It represents the strongest commitment PPS has made in years to address earthquake dangers in elementary and middle schools. Board members acknowledged that collective parent advocacy made this breakthrough possible. The resolution, combined with the successful bond passage, marks a watershed moment in the multi-year effort to protect children from earthquake risks in Portland schools.

With both the policy commitment and funding now secured, the community has successfully transformed years of advocacy into concrete action that will make Portland schools safer for all students. Still, passing the bond is only the beginning. Now, the work continues to ensure that the allocated funding achieves the goal of making our schools safer. If you'd like to learn more and get involved, please join the coalition of concerned PPS family and community members at safestructurespps.org.

UPCOMING MEETINGS:

- September 9, 2025
- November 11, 2025
- January 13, 2026
- March 10, 2026

LOCATION:

We are now holding hybrid meetings. The in-person meeting location is Grant Park Church. To obtain the agenda and the Zoom meeting link, go to the meetings page on our website, grantpark-na.org.

MEETINGS:

GPNA holds elections at the Annual Meeting in March. Necessary special or emergency meetings may be scheduled at any time. Meetings are open to the public. If you need special accommodation, please contact a Board member.

GPNA EXECUTIVE BOARD:

President:

Molly Hamill

Vice President:

Miro Wesener

Secretary:

Ari Grubner

Treasurer:

David Richardson

Land Use Chair:

Eldo Varghese

Newsletter Editor:

Stacey Tipp

At Large:

Neon Brooks, Jill De Rosa,
Daniel Hoyer, Tess Ipsen,
Jake Wicks

Contact the Board at:

general@grantpark-na.org



Grant Park
Neighborhood Association



SUBSCRIBE

Head over to www.grantpark-na.org to sign-up to receive future emails about GPNA updates, news, event information and more. (Scroll to the bottom of the homepage to sign-up.) Your information will be kept confidential and never shared.

www.grantpark-na.org

Grant Park Neighborhood Association Board Changes

By Stacey Tipp

Since our last newsletter edition, there have been some major changes to the GPNA board. First, the Rev. Ari Grubner from Grant Park Church stepped up to fill our vacant board secretary position, and Miro Wesener agreed to serve as Vice President. Thank you both! Also, Neon Brooks is stepping down as land use chair, although she will stay on the board as an at-large member and continue as the point person for the issue of lighting the Grant H.S. Bowl. Neon, who joined the GPNA board in early 2018, has done sterling work for the neighborhood over the course of her tenure. The role of land use chair is quite demanding, and no matter what the issue, Neon has been phenomenal in helping keep the neighborhood informed and the community's voice heard. Another recent board change is the resignation of at-large board member, Bikram Vaidya. As regular readers of this newsletter will know, Bikram recently published a very successful book on Nepalese Cooking and is currently on a world tour promoting his book. Once Bikram's tour is over next year, he would love to return and serve again on the GPNA board.

We also gained two new board members. Eldo Varghese, a member of the land use committee, will replace Neon as land use chair, and Daniel Hoyer joined as an at-large member.

Eldo Varghese



Eldo and his wife, Giulia, moved to the neighborhood about four years ago. He works for a small non-profit academic journal, from home. Enjoys biking, reading, anime, hiking, and spending time with extended family in his free time. He likes to give back to the community primarily through volunteering and is involved in multiple local advocacy/non-profit groups. He aspires to finish

working on his many house projects, spend more time with his kids, and grow old with his wife.

Daniel Hoyer



Daniel is a retired industrial plastic recycler. He is a bike rider and daily dog walker, and you will see him and Dash out and about in the neighborhood. Daniel is also an avid gardener and cook.

He travels a lot and is always happy to return to the green here in Grant Park. Daniel is looking to learn about GPNA and see where he can help.

Grant Park Neighborhood Association (GPNA) Bylaw Changes

By Stacey Tipp

At the March 11, 2025, board meeting, the GPNA passed several bylaw changes. The most important change was to allow those who work, but do not live with our neighborhood boundaries, to be members of the GPNA. The rationale for this change is that “workers” in our neighborhood, who spend eight hours a day or more in Grant Park, have a vested interest in neighborhood livability and land use issues, and should be able to have a say in their outcome. For instance, you might be a Grant High School or Beverly Cleary School employee, who lives in another neighborhood, but are passionate about improving traffic safety around your school. You could be a Small Wonders preschool employee (the preschool is housed in Grant Park Church) and be super-concerned about excessive speeds on Knott St. Well now you can become a GPNA board member, or join one of our committees (e.g., land use, fundraising/events), and try to work on the issue(s) important to you. You can also vote on future bylaw changes and in board elections. At-large board members, who don't have a specific area of responsibility but are full voting GPNA board members, can be voted in at any time.

At the March 11 meeting, the language of our bylaws was also refined to emphasize that we are not a homeowner's association. There are no dues or initiation fees, and membership is not limited to homeowners. We are especially interested in having more renters join us. All our meetings are open to the public and offered in a hybrid format. Come join us!

5 Tips To Make Your Home More Energy Efficient

EST.
1991
C

1. **Add additional insulation** - Drill & fill insulation makes it easier than ever to regulate the temperature of your home.
2. **Install new windows** - Double- or triple-pane windows with low-E coatings help maintain indoor temperatures and block UV rays.
3. **Use a smart thermostat** - Save money & energy by heating & cooling on a schedule.
4. **Landscape for efficiency** - Planting trees for shade and using native plants can reduce cooling costs and irrigation needs.
5. **Consider a mini split** - If the temperature of your home varies in each room, consider a mini split for zoned heating & cooling.

Ready to explore a home remodel?

Let's Connect!

CooperDesignBuild.com

info@CooperDesignBuild.com

503-282-0545

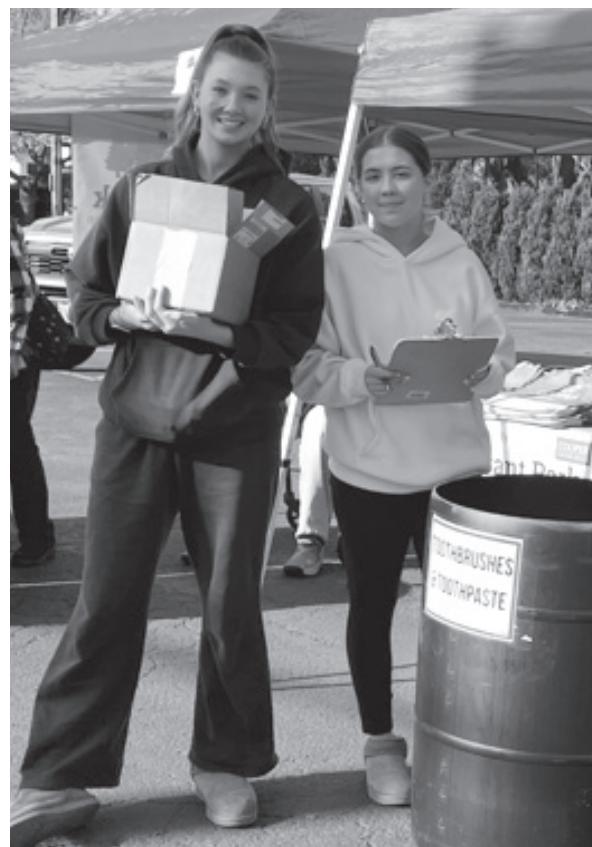


Successful Donations Event Brings in a Haul for a Great Cause

By Stacey Tipp

On April 5, the Grant Park Neighborhood Association (GPNA) held a donations drive of personal hygiene items in the parking lot of Grant Park Church. The drive was to benefit Do Good Multnomah, an organization doing lifesaving work with homeless veterans. Volunteers from the GPNA board were joined by Nicole Baker, the marketing manager for our wonderful sponsor COOPER Design Build, as well as two enthusiastic Grant High School Juniors, Reese Mandic and Abby Amico (pictured).

The donations drive was a great success. Thanks to our generous neighbors and sponsor, we collected 120 razors/shaving creams, 69 deodorants, 161 toothbrushes/toothpastes, 56 bottles of body lotion, 192 bars of soap, and 85 bottles of shampoo and conditioner. Nice work, Grant Park!



Save Money on Summer Fun for Kids and Help GPNA!

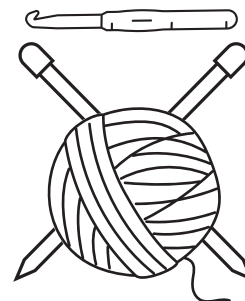
Pedalheads Bike is a learn-to-ride camp known for taking kids from training wheels to two wheels to riding safely and confidently on the road. They operate at 13 locations around the PDX Metro and Vancouver, WA areas during spring break and summer break. Use the unique code **GRANTPARK25** by June 22, 2025, to receive \$25 OFF any Pedalheads Bike or Trail Program in Oregon and Vancouver. For every code redeemed, Pedalheads will donate \$25 back to the Grant Park Neighborhood Association! It's a win-win for everyone! Go to pedalheads.com to sign up today!



Like to Knit and Crochet? Visit the "Grant Park Fibrary!"

By Stacey Tipp

Most of you are probably aware of and appreciate the various little free libraries scattered throughout our neighborhood and beyond. You can take books to read yourself and also leave books for your neighbors to enjoy. Well, if you're a fan of knitting and crochet, you need to know about the "Grant Park Fibrary," located on NE 38th between Tillamook and Thompson. Instead of books, you will find crocheting and knitting supplies. You can leave or take items in the same kind of exchange as in the little free libraries. Supplies in the Fibrary include yarn, needles, hooks, stitch markers, finished creations, patterns, books, and more. Take a skein, leave a skein! The Fibrary even has its own Instagram page and is listed on the PDX Sidewalk Joy website:



<https://www.instagram.com/grantparkfibrary?igsh=cXN3NDZyY3E4dmhj>

<https://www.pdxsidewalkjoy.com/>



1969 NE 42nd Avenue
– Hollywood –

10 years running

- Personal Training
- Group Classes
- Athletic Development

vivefitnesspdx.com

info@vivefitnesspdx.com

New clients, mention this ad for a free set of travel bands when you meet a trainer for a complimentary consultation*

*while supplies last

Contributing to this Newsletter

For information on letters to the editor and how to submit an article to this newsletter, as well as newsletter advertising and advertising rates, please go to the newsletters page on our website:

www.grantpark-na.org

Be a Part of Our Community

Attend an upcoming Grant Park Neighborhood Association meeting:

September 9, 2025, November 11, 2025
January 13, 2026, March 10, 2026

LOCATION:

We are now holding hybrid meetings. The in-person meeting location is Grant Park Church. To obtain the agenda and the Zoom meeting link, go to the meetings page on our website, grantpark-na.org.

GRANT PARK CHURCH

THE NEIGHBORHOOD'S CHURCH

PURSuing CHRIST AS A WELCOMING
AND AFFIRMING, ACTION-ORIENTED,
PROGRESSIVE COMMUNITY.

SUNDAY WORSHIP 10 AM
PASTOR ARI GRUBNER
2728 NE 34TH AVE

GRANTPARKCHURCH.COM

SUMMER CAMP ♦ NO SCHOOL DAYS

**brain
box
SCIENCE**

**Dive into imaginative
STEAM and critical
thinking adventures!**

Know your own mind!

BrainboxScience.com ♦ NE PDX at the Lloyd Center

NFPDX.com



**Natural
Furniture**



1510 NE 37th

503-284-0655

Karen Farmer Landscape Architecture
Residential Landscape Design

KFLAdesign.com

Contact for a free estimate: Karen@kfladesign.com



OR LIC # LA-1088
CA LIC # LA-6152
CR: L552



pacificaudiologyclinic

Serving the greater Portland area since 2007

We pride ourselves on honesty, integrity, and serving our community.



Pacific Audiology Providers
Dr. Allison Bradley, Dr. Cris Adams,
Dr. Brittany Stevens, Dr. Oriana
Maldonado, & Dr. Lindsey Hill

Woman-owned.

Services:

- Comprehensive Audiologic Assessment for Children and Adults
- Hearing Aid Evaluations and Fittings
- Hearing Aid Cleanings and Repairs & Programming (all Brands)
- Custom Earplugs for Musicians, Noise, and Sleep
- Assistive Listening Devices

30-Day Trial Period
with New Hearing Aids

Most Major Insurances Accepted



3502 NE Broadway Street, Portland, OR 97232
503-284-1906 | pacoregon.com

Land Use Update

By Neon Brooks, Former GPNA Land Use Chair and Current At-Large Board Member

Grant Bowl Lighting Project

The land use application for the Grant Bowl lighting project is complete. Depending on the date this newsletter hits your front porch, a date of June 11th, 2025, was/is set for the land use hearing. The hearing will be held on zoom at 9am. Email Andrew.Gulizia@portlandoregon.gov for more details.

The land use notice can be found here: <https://tinyurl.com/lightsnotice>. Public comment can be sent to hearingsofficeclerks@portlandoregon.gov until June 11th. We encourage you to cc gp.landuse@gmail.com on your public comments.

GPNA has submitted a public comment that is consistent with our consensus position on lighting mitigations approved by the GPNA board last September, synthesizing over a year of community engagement on the issue. Our comment can be found here: <https://tinyurl.com/gpnacomment> or on the “News and Events” page of our website, <http://grantpark-na.org/news-events/>

We will send further timely updates on this issue to our email list over the summer. Please go to <http://grantpark-na.org/contact-us/> to sign up.

Crosswalks on US Grant Place by End of September

Over a year of advocacy by neighbors and GPNA has led to action to improve traffic safety on US Grant Place south of Grant High School. The Portland Bureau of Transportation (PBOT) has informed us that it has approved the installation of crosswalks at both NE 35th and 36th Avenues. We have been told that the work will likely be done sometime before September 30th and may be prioritized higher depending on maintenance team capacity. Thanks to all neighbors who helped advocate for safer pedestrian crossings and lower speeds on this key stretch of road!

Your Voice is Needed: Unsafe Driving Near Beverly Cleary School

We have heard from a number of residents living West of NE 33rd about speeding, drivers running stop signs, and other careless driving in this area, especially at the beginning and end of the school day. This behavior is dangerous to all our neighbors, including young students walking to and from Beverly Cleary School. To address this danger, GPNA has several suggestions for the community:

- **Please call PBOT’s 503-823-SAFE hotline or 311 to report stop sign violations and other unsafe**

driving. Please call to report safety concerns, specifically regarding incidents you have witnessed, and the impacts of these safety concerns on you and your family (e.g., on children’s ability to walk to school on their own). Share specific suggestions (e.g., stop sign visibility, changes in traffic patterns) to improve safety. **The more calls PBOT gets about safety concerns around Beverly Cleary, the more likely they are to take meaningful action.**

- **Talk to student drivers about obeying traffic laws, slowing down, and being alert for people walking.** It is an unfortunate truth that the independence of student drivers often comes at the cost of younger students being able to walk safely and independently to school. Please remind student drivers to be watchful for children and other people walking whenever they are behind the wheel.
- **Consider walking, biking, or taking public transit to school.** The more people who travel by bike, bus, and foot, the safer it is for others to do the same. Let’s work towards the goal of making our neighborhood one that fosters kids’ independence and is walkable for everyone!
- **Join the GPNA Land Use Committee to help us continue to advocate on this issue.** We have found that empowering a neighbor directly impacted by these issues through the GPNA land use committee is one of our most effective strategies for improving neighborhood safety conditions. The GPNA land use committee meets only a few times a year and is a minimal commitment. We would love to have a neighbor from the area near BCS join the committee to help lead some advocacy on this issue. Please email gp.landuse@gmail.com if this could be you!

Gordon’s Auction Delayed Again

The auction for the Gordon’s Fireplace building at 3300-3324 NE Broadway is now scheduled to begin on July 7th, 2025, with a minimum bid of \$250,000. Time will tell whether this is delayed again or whether the auction actually occurs in July.

Look elsewhere in this newsletter for updates on our new Land Use Committee chair Eldo Varghese, speed cushions and crosswalks on NE Knott, and movement towards seismic safety upgrades for Beverly Cleary School and other high-risk schools in Portland. As always, the land use chair can be reached at gp.landuse@gmail.com

Good News for Our Neighborhood! Traffic Safety Improvements Are Coming to NE Knott Street

By Susan Weedall, Neighbor and Member of the Grant Park Neighborhood Association (GPNA) Land Use Committee

After numerous resident reports of unsafe road conditions, safety improvements are finally coming to NE Knott Street between NE 21st Avenue and NE 33rd Avenue. These enhancements will be fully funded through the PBOT Fixing Our Streets program.

Speed Cushions to Slow Traffic

Speed cushions will be installed along NE Knott Street to help manage traffic speeds while preserving emergency vehicle access:

- **Installation Timeline:** Expected in late summer/fall 2025 or more likely spring 2026
- **Design Features:** These 3-inch-high traffic calming devices function similarly to speed bumps but include strategic cutouts that allow emergency vehicles to maintain speeds above 20 mph when necessary
- **Emergency Route Consideration:** As NE Knott serves as a secondary emergency route for Portland Fire, speed cushions were selected instead of traditional speed bumps
- **Spacing:** The cushions will be strategically placed to support the desired 20 mph posted speed limit for the street

New Crosswalk Coming

To improve pedestrian safety along this stretch:

- PBOT has approved one crosswalk installation, which will follow the speed cushion implementation
- PBOT's recommended locations include: NE 30th Avenue, NE 31st Avenue, or NE 32nd Avenue
- **YOUR INPUT MATTERS!** The final placement of the one approved crosswalk will be influenced by resident feedback collected through a community survey

- PBOT will also conduct pedestrian counts (typically during 7-9 AM or 4-6 PM over a 72-hour period) to help determine optimal placement

We Need Your Voice!

While PBOT has currently approved only one crosswalk, they are open to hearing community preferences about additional potential locations:

- The GPNA Land Use Committee will collect and compile resident feedback regarding preferred location of the one approved crosswalk, and preferences for additional desired crosswalk locations
- Survey results will be shared directly with PBOT for consideration
- **DEADLINE FOR SURVEY SUBMISSION: July 31, 2025**

How to Participate

- Complete the online survey: <https://tinyurl.com/neknottst>
- No internet access? Leave a voicemail at 503-308-9514 to request a paper survey (please note the phone will ring several times before pickup)
- Questions or comments? Email: gp.landuse@gmail.com

Special Thanks

Many thanks to all residents who reported unsafe conditions to PBOT, and to the Alameda Neighborhood Association for their collaboration with the Grant Park Neighborhood Association on this important safety project. Your advocacy is making our streets safer for everyone!

Emergency Preparedness for You, Your Family, and Your Community! Be Prepared, Not Scared!

By Debra Haines, Grant Park Neighborhood Emergency Team Member

Are you ready for the unexpected? If you can gather 10 or more neighbors, consider inviting your Neighborhood Emergency Team (NET) to present simple, inexpensive ways to prepare for emergencies ranging from severe weather to a major earthquake. During this engaging session we will cover essential topics like creating emergency plans for home, work, and school; assembling go/stay kits; storing water and food; retrofitting your home for safety; preparing multifamily buildings; managing emergency sanitation; and more. To request the 75-minute

presentation, go to: <https://app.smartsheet.com/b/form/195273bc5460450dba9f1ae041d0c04d>

Plus, learn about volunteer opportunities to support your neighbors during emergencies! NET training is FREE for anyone who lives or works in Portland. Training is provided by the Portland Bureau of Emergency Management and Portland Fire & Rescue. With over 1,200 active NET volunteers citywide, you can be part of a team that makes a difference. Learn more and apply: <https://www.portland.gov/pbem/neighborhood-emergency-teams/volunteer>

Volunteer Opportunity: Give a Ride and Help Your Neighbors Live Fuller Lives

By Maruska Lynch, Metropolitan Family Service Community Engagement Coordinator

Being able to get to a medical appointment or to the grocery store should be easy. For many older adults and people with disabilities in our community it is actually a struggle to find affordable and accessible transportation to get to these vital destinations.

Metropolitan Family Service (MFS) is a nonprofit organization whose mission is to help people move beyond the limitations of poverty, inequity, and social isolation. Project Linkage is a program of MFS that has been serving older adults and people with disabilities* for over 40 years. Through a partnership with Ride Connection, Project Linkage delivers accessible transportation that supports more than a thousand older adults and people with disabilities in our N and NE community. Our goal is to help people stay connected with the world and live comfortably in their homes. Project Linkage has provided over 32,000 rides annually, and many of these rides are delivered by committed volunteers. Unfortunately, Project Linkage needs many more volunteers to meet the demand for this service; currently, they have been turning away half the requests they get.

This is where you come in! Do you drive and have five years' driving experience? Join a great team of Project Linkage volunteers and provide safe, reliable transportation for older neighbors in your community.

This opportunity is very flexible. You let Project Linkage know when you are available, and we will let you know who needs a ride and where. Volunteers can drive their own vehicles or be trained to drive a Project Linkage van. You can provide one or two rides per month or several per week. It's entirely up to you. Any ride you furnish is a beautiful gift that helps people continue to live full lives. The clients who use this service are so grateful and this comes through in a smile they give a driver or a card they send to our staff with heartfelt sentiments like, "I feel blessed each and every day that I met you. You are my special people and that's from my heart."

Come join a team of extraordinary volunteers and wonderful staff. Call 503-290-9427 or email the author at maruskal@mfs.email

If you find yourself in need of a ride, you can connect with Ride Connection at 503-226-0700 or www.rideconnection.org, our MFS partner in delivering accessible transportation.

**An older adult is defined by most granting agencies as 65+, although sometimes Project Linkage can provide rides for those aged 60+. If people have a disability they can be younger; disabilities are self-declared and can be temporary (e.g., post-surgery or a broken leg)*

Consider Donating Blood. It's Good for You Too

By Stacey Tipp

Many of us are feeling unsettled, anxious, and depressed right now about where our country is headed. These are turbulent times no matter what your political persuasion. I have found that looking for opportunities to do something for others is a good antidote to despair and feelings of helplessness.

An easy way to help others, if you are able, is to donate blood. Only about 3% of eligible Americans donate blood. It's a minor inconvenience compared to the benefits to the recipient. If you can do it, you might also consider platelet donation. Platelets are cells in the blood that help form clots and control bleeding. Platelets are needed to support patient surgeries, cancer patients, blood disorders, and organ transplants. Platelet donation is more of a time

commitment, two to three hours, but there's something almost magical about using your body to help heal another person's body.

The Portland Donor Center, a permanent Red Cross donation site (with its own parking lot) is convenient to our neighborhood at 3131 N. Vancouver Avenue. The phone number is 503-280-1446. Your donation might help someone locally, or it might be transported to help someone on the opposite side of the country. The Red Cross has a very cool Blood Donor phone App you can download that lets you track where your donation goes (your "Blood Journey"). You won't know who gets your blood, but you'll learn the town and facility where they are being treated. Learn more at <https://www.redcross.org>